

SCOM 2016 Active Directory Domain Function Levels olarak 2000 Native, 2003, 2008,2008R2, 2012 ve 2012 R2 yi support eder.

Kuruluştan önce sağlıklı bir DNS yapısının olması gerekmektedir.

Minimum 2012 R2 işletim sistemi tüm bileşenleri için kurulacak minimum işletim sistemi versiyonudur.

SQL için 2012 sp2 ve üzeri gerekmektedir. Collection olarak SQL_Latin1_General_CP1_CI_AS olması gerekmektedir.

Web console için IE11 ve silverlight5 gereklidir.

.net 4.5.2 veya 4.6 gerekmektedir.

Hardware gereksinimi olarak <http://download.microsoft.com/download/C/A/6/CA60425C-950B-456E-986C-C5F2FCD5668D/System%20Center%202012%20Operations%20Manager%20Sizing%20Helper%20Tool%20v1.xls> linkten monitor edilecek sunucu\servis lere göre hesap yapmak gerekmektedir.

SCOM ve DB sunucu ayrı sunuculara kurulması hem SCOM un hem SQL güvenlik ve performans sorunlarının önüne geçmek için ayrı sunuculara kurulması gerekmektedir.

SCOM sunucusuna aşağıdaki bileşenlerin kurulması gerekmektedir.

Import-Module ServerManager

Add-WindowsFeature Web-Server, Web-WebServer, Web-Common-Http, Web-Default-Doc, Web-Dir-Browsing, Web-Http-Errors, Web-Static-Content, Web-Health, Web-Http-Logging, Web-Log-Libraries, Web-Request-Monitor, Web-Performance, Web-Stat-Compression, Web-Security, Web-Filtering, Web-Windows-Auth, Web-App-Dev, Web-Net-Ext45, Web-Asp-Net, Web-Asp-Net45, Web-ISAPI-Ext, Web-ISAPI-Filter, Web-Mgmt-Tools, Web-Mgmt-Console, Web-Mgmt-Compat, Web-Metabase, NET-Framework-45-Features, NET-Framework-45-Core, NET-Framework-45-ASPNET, NET-WCF-Services45, NET-WCF-HTTP-Activation45, NET-WCF-TCP-PortSharing45, WAS, WAS-Process-Model, WAS-Config-APIs -restart

İis i daha sonra register etmek gerek.

```
cd %WINDIR%\Microsoft.NET\Framework64\v4.0.30319\
```

```
aspnet_regiis.exe -r
```

```
IISRESET
```

SCOM a Report viewer ve Microsoft System CLR Types for SQL Server 2014" (ENU\x64\SQLSysClrTypes.msi) kurulumu gerçekleştirilmesi gerek.

<https://www.microsoft.com/en-us/download/details.aspx?id=45496>

<https://www.microsoft.com/en-us/download/details.aspx?id=42295>

Aşağıdaki linkten scom da kullanılacak servis hesapları için gerekli script var. Manuel de açılabilir. Hazır script ile de account lar açılabilir. Ben aşağıdaki hesapları açtım.

<https://gallery.technet.microsoft.com/SCOM-Service-Accounts-31af7781>

scom admin securty gurubunu scom un kurulacaağı sunucuya local admin olarak eklemek ve sql in kurulduğu sunuculara sql için açılan account ları local admin olarak eklemek gerek.

Active Directory Users and Computers [DC.bosnak.c
Saved Queries
bosnak.club
Builtin
Computers
Domain Controllers
ForeignSecurityPrincipals
Managed Service Accounts
Microsoft Exchange Security Groups
Users
SCOM

Name	Type	Description
SCOM_AA	User	
SCOM_DA	User	
SCOM_SQL_Read	User	
SCOM_SQL_Write	User	
SCOM_SQL_SA	User	
SCOM_SQL_Reporting	User	
SCOM_ADMINS	Security Group...	

SCOM_ADMINS Properties

General Members Member Of Managed By

Members:

Name	Active Directory Domain Services Folder
SCOM_AA	bosnak.club/Users
SCOM_DA	bosnak.club/Users

SQL kurulumunda ayrıca SSMS i de db üzerinde ihtiyaç halinde management için kuruyorum.

Feature Selection

Select the Standard features to install.

Product Key
License Terms
Global Rules
Microsoft Update
Install Setup Files
Install Rules
Setup Role
Feature Selection
Feature Rules
Instance Configuration
Server Configuration
Database Engine Configuration

Features:

Instance Features

☒ Database Engine Services
☐ SQL Server Replication
☒ Full-Text and Semantic Extractions for Sea
☐ Data Quality Services
☐ Analysis Services
☒ Reporting Services - Native

Shared Features

☐ Reporting Services - SharePoint
☐ Reporting Services Add-in for SharePoint Proc
☐ Data Quality Client
☐ Client Tools Connectivity
☐ Integration Services

SQL Servis account u ayarlayıp sql agent servisinin start olması gerekmektedir.

Service Accounts Collation

Microsoft recommends that you use a separate account for each SQL Server service.

Service	Account Name	Password	Startup Type
SQL Server Agent	BOSNAK\scomsqlsa	●●●●●●●●	Automatic
SQL Server Database Engine	BOSNAK\scomsqlsa	●●●●●●●●	Automatic
SQL Server Reporting Services	BOSNAK\scomsqlreport	●●●●●●●●	Automatic
SQL Full-text Filter Daemon Launc...	NT Service\MSSQLFDLa...		Manual
SQL Server Browser	NT AUTHORITY\LOCAL ...		Disabled

SQL Collation ayarının doğru olarak düzenlenmesi gerekmektedir.

www.semihuykan.com.tr

Service Accounts Collation

Database Engine:

SQL_Latin1_General_CP1_CI_AS Customize...

Latin1-General, case-insensitive, accent-sensitive, kanatype-insensitive, width-insensitive for Unicode Data, SQL Server Sort Order 52 on Code Page 1252 for non-Unicode Data

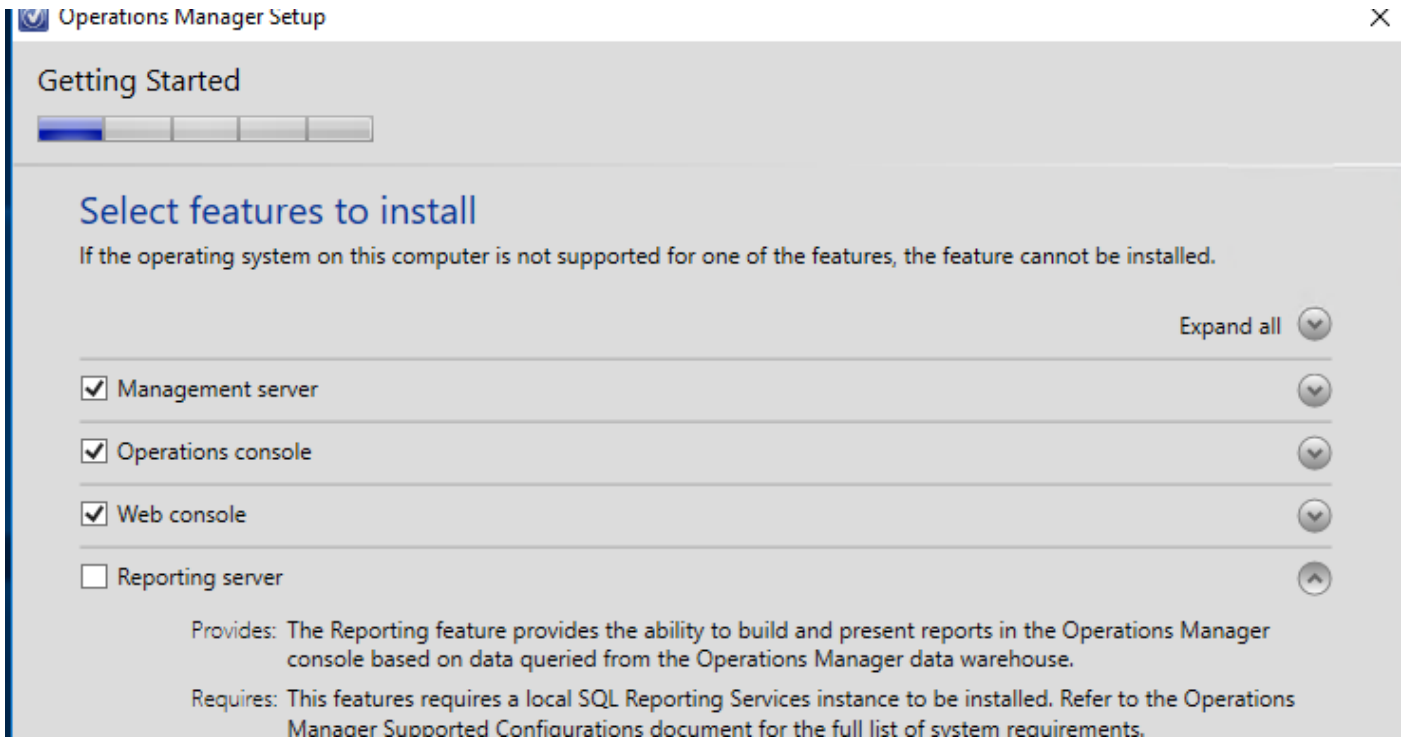
Reporting servisini SQL sunucusu üzerine kuruyorum. SCOM Reporting servisi SQL Reporting Servisinin olduğu sunucu üzerine kurulmaktadır.

Reporting Services Configuration

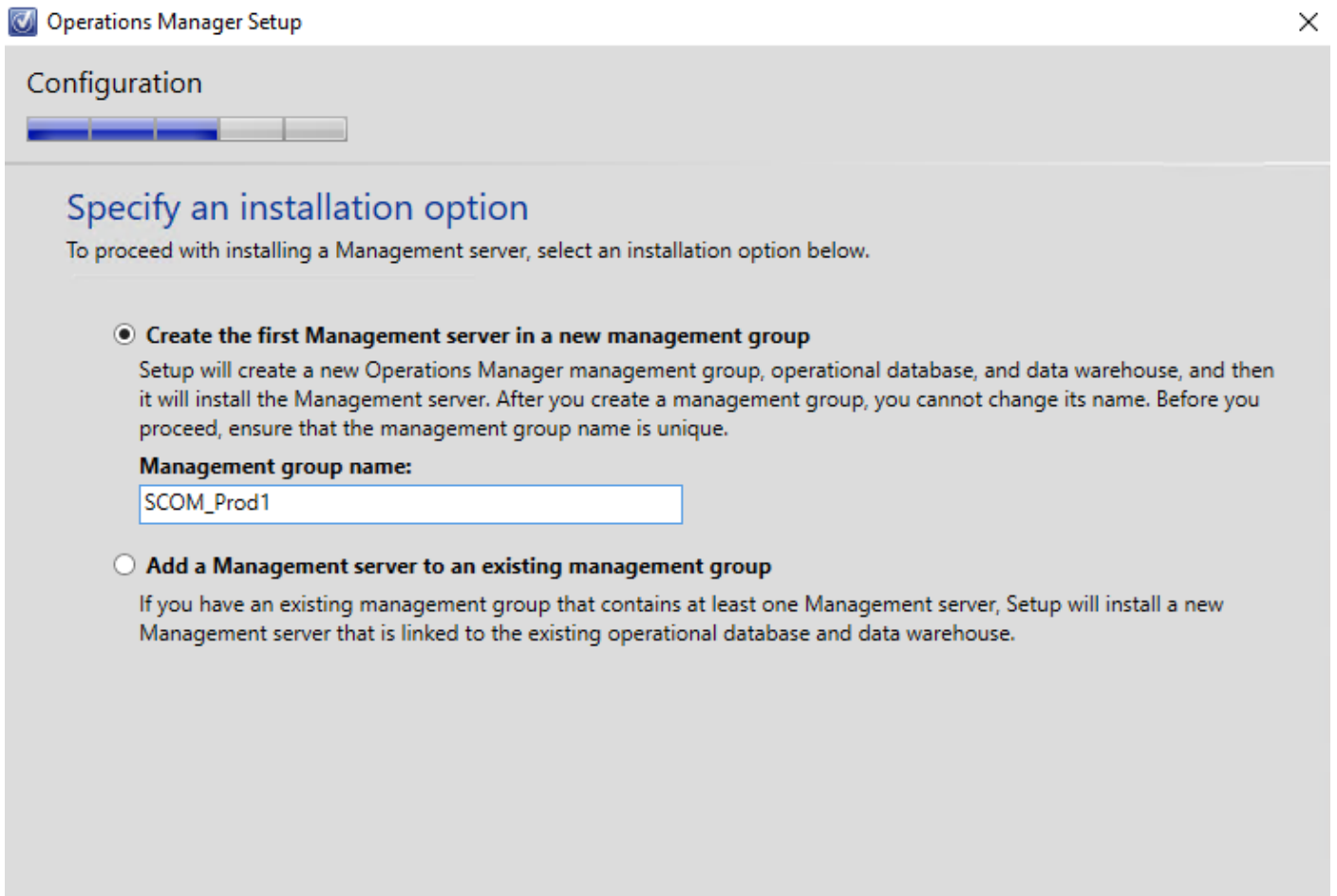
Specify the Reporting Services configuration mode.

<ul style="list-style-type: none">Product KeyLicense TermsGlobal RulesMicrosoft UpdateInstall Setup FilesInstall RulesSetup RoleFeature SelectionFeature RulesInstance ConfigurationServer ConfigurationDatabase Engine ConfigurationReporting Services Configura...Feature Configuration RulesReady to InstallInstallation ProgressComplete	<p>Reporting Services Native Mode</p> <p><input checked="" type="radio"/> Install and configure. Installs and configures the report server in native mode. The report server is operational after setup completes.</p> <p><input type="radio"/> Install only. Installs the report server files. After installation, use Reporting Services Configuration Manager to configure the report server for native mode.</p> <p>Reporting Services SharePoint Integrated Mode</p> <p><input type="radio"/> Install only. Installs the report server files. After installation use SharePoint Central Administration to complete the configuration. Verify the SQL Server Reporting Services service is started and create at least one SQL Server Reporting Services service application. For more information, click Help.</p>
---	---

SCOM SQLSa, SCOM Read, SCOM Write ve SCOM Admins gurubunu kuruluştta SQL Admin olarak belirtiyoruz. SCOM kuruluşunu reporing servisi olmadan kuruyorum.



Management Group Name i daha sonra deđiřtirilemektedir. Organizasyona özel bir isim verilmesi gerekmektedir.



SCOM Web console hangi web sitesinde ve ssl li olarak mı çalışacağı seçeneğinin bulunduğu ekrandır.

Configuration



Specify a web site for use with the Web console

Select an IIS web site to be used for the Web console. Please select an existing web site from the available web sites on the local IIS server.

Web site:

Default Web Site

☐ Enable SSL

SSL is required for secure transfer of credential and authentication data between the browser and the web server. It is recommended that SSL is enabled to lower the risk of exposing sensitive data, such as logins, server names, IP addresses, etc. Please refer to the deployment guide for more information about configuring SSL.



The Reporting component was not installed or is not being installed. If the reporting component is not installed, Application Advisor will not work correctly.

Configuration



Select an authentication mode for use with the Web console

Select an authentication mode. More information about these authentication mode and using SSL, refer to the Deployment Guide.

☒ Use Mixed Authentication (Forms Authentication)

Use Mixed Authentication for intranet scenarios. User will have to provide user name and password or use current Windows credentials to access the Web console.

☐ Use Network Authentication

Use Network Authentication for extranet scenarios. User will have to provide user name and password to access the Web console.

AD de açılan account ları SCOM kuruluşunda istenilen yerlere yazıyorum ve kuruluşu bitiriyorum.

Configuration



Configure Operations Manager accounts

If you want to use a single account for all services, verify that the account has all the required rights. For more information, see the Operations Manager deployment documentation.

Account Name	Local System	Domain Account	Domain\User Name	Password
Management server action account	<input type="radio"/>	<input checked="" type="radio"/>	bosnak\scomaa	••••••••
System Center Configuration service and System Center Data Access service	<input type="radio"/>	<input checked="" type="radio"/>	bosnak\scomda	••••••••
Data Reader account		<input checked="" type="radio"/>	bosnak\scomsqlr	••••••••
Data Writer account		<input checked="" type="radio"/>	bosnak\scomsqlw	••••••••

[Installation Guide](#)

Previous

Next >

Cancel

Processing



Installation progress

- ✓ Initial configuration
- ✓ Operational database configuration
- ⚠ Management server
- ➡ Data warehouse configuration
- Operations console
- Web console
- Final configuration

[Release Notes](#)

[Installation Guide](#)

[Read Documentation](#)

[System Center Online](#)

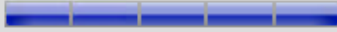


Previous

Next >

Cancel

Complete



Setup is complete

Please review the installation results. You can repair or add features by restarting Setup.

✓ Initial configuration

✓ Operational database configuration

⚠ Management server

Management server warning:

An evaluation version of Operations Manager was successfully installed. To properly license Operations Manager, use the Set-SCOMLicense cmdlet. More information on this cmdlet is available in the Operations Manager Cmdlet Reference in the TechNet library.

[For more information, view the Setup log.](#)

✓ Data warehouse configuration

✓ Operations console

✓ Web console

☐ Launch Microsoft Update when the wizard closes

☒ Start the Operations console when the wizard closes

[Release Notes](#)

[Installation Guide](#)

[Read Documentation](#)

[System Center Online](#)

Close

Kuruluş tamamlandı. Management server daki uyarı lisans ile ilgili uyarıdır.

Monitoring

- Monitoring
 - Active Alerts
 - Discovered Inventory
 - Distributed Applications
 - Maintenance Schedules
 - Task Status
 - UNIX/Linux Computers
 - Windows Computers
 - Agentless Exception Monitoring
 - Application Monitoring
 - Data Warehouse
 - Microsoft Audit Collection Services
 - Microsoft Windows Client
 - Microsoft Windows Server
 - Network Monitoring
 - Operations Management Suite
 - Operations Manager
 - Synthetic Transaction
 - UNIX/Linux Computers

Show or Hide Views...

New View ▶

Monitoring

Authoring



Monitoring Overview



Required Configuration Tasks:

In order for Operations Manager to manage and monitor your network you must complete the following steps:

- ➔ Required: Configure computers and devices to manage
- ➔ Required : Import management packs
- ➔ Required: Enable Notification Channels
- ➔ Upgrade to full version

State and Alerts:



Computer Health:

Go



Critical:



Warning:



Healthy:



Maintenance Mode:



Unknown Status: